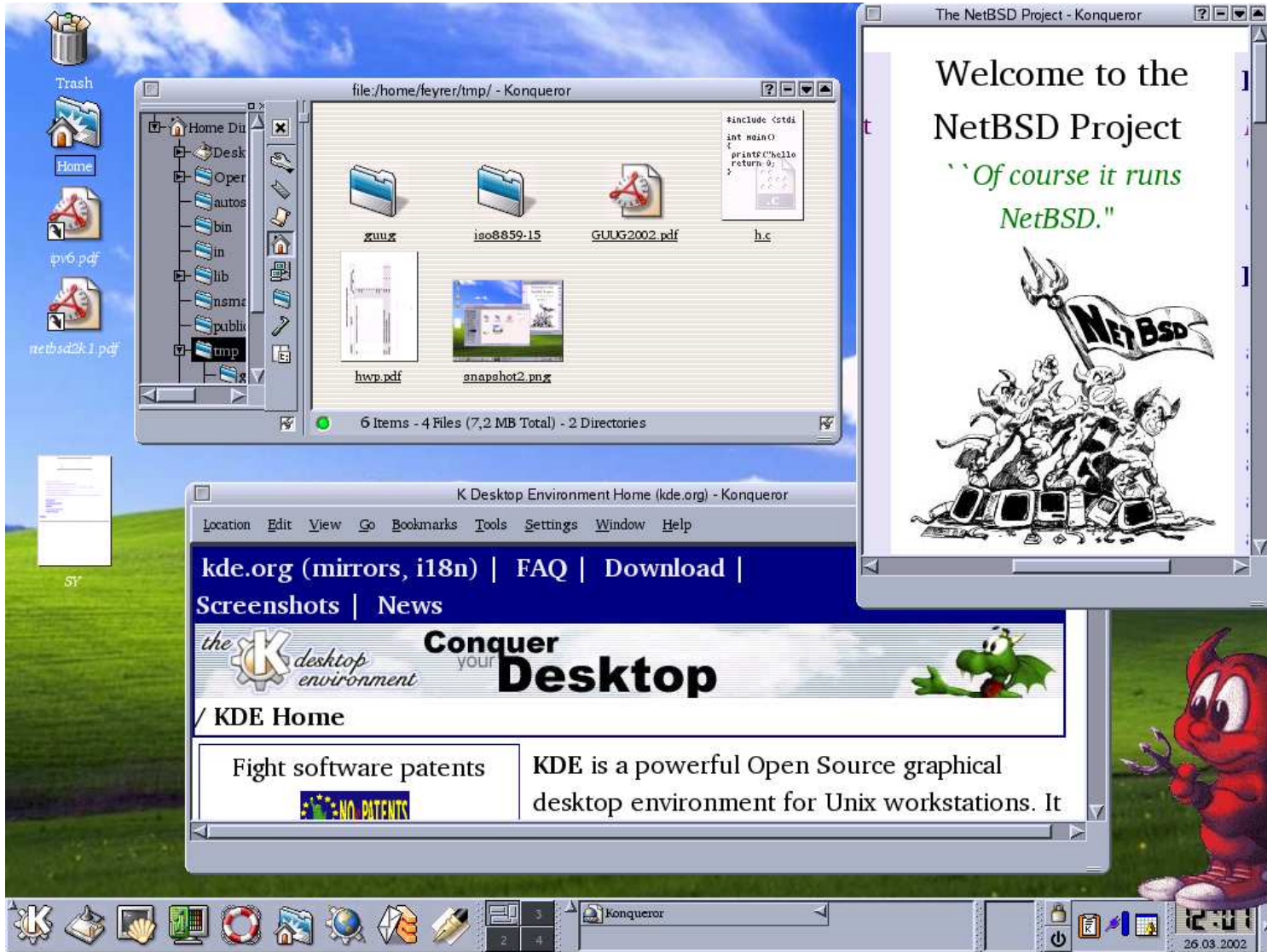




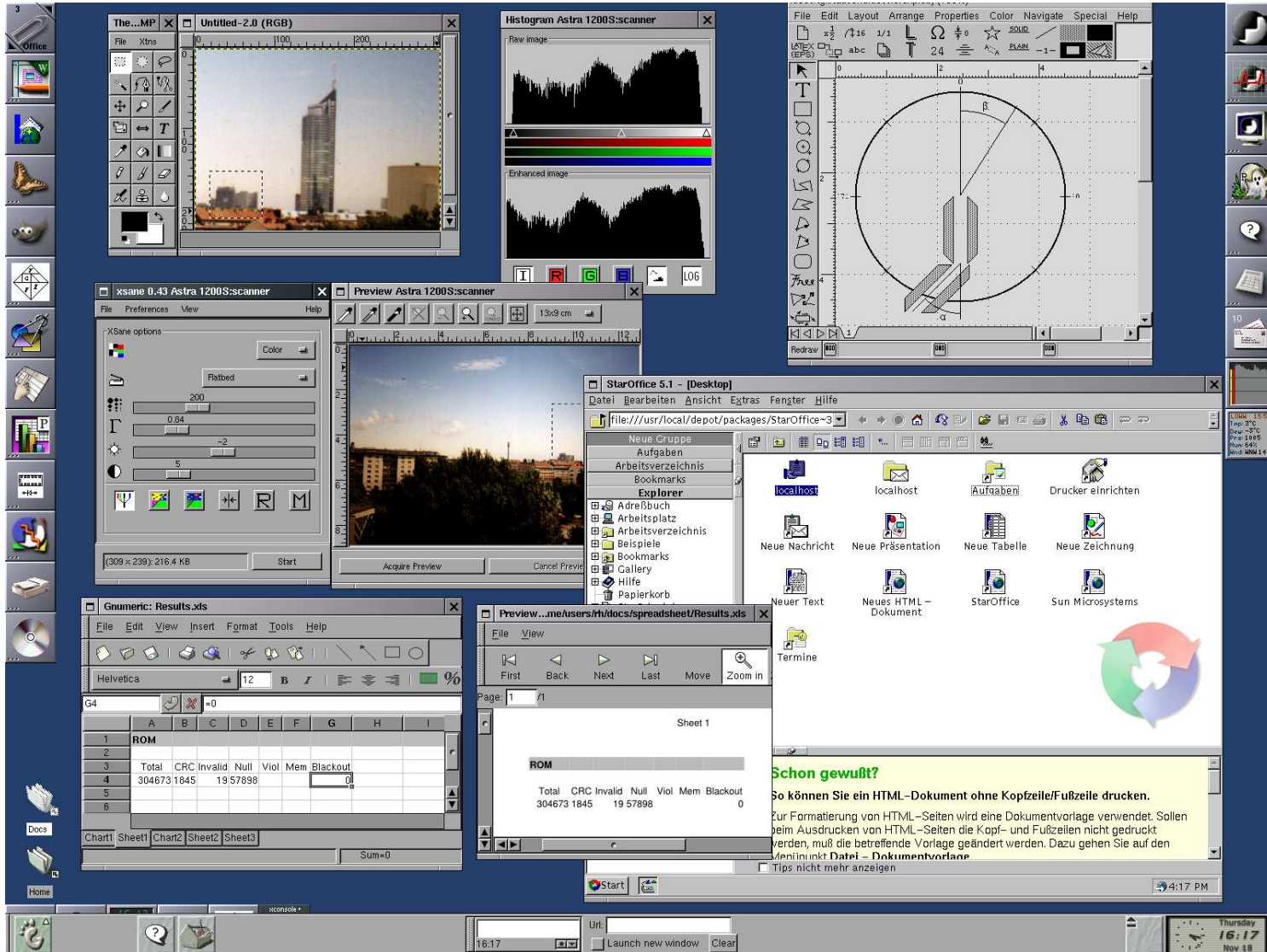
Hubert Feyrer <hubertf@NetBSD.org>

What does NetBSD look like?

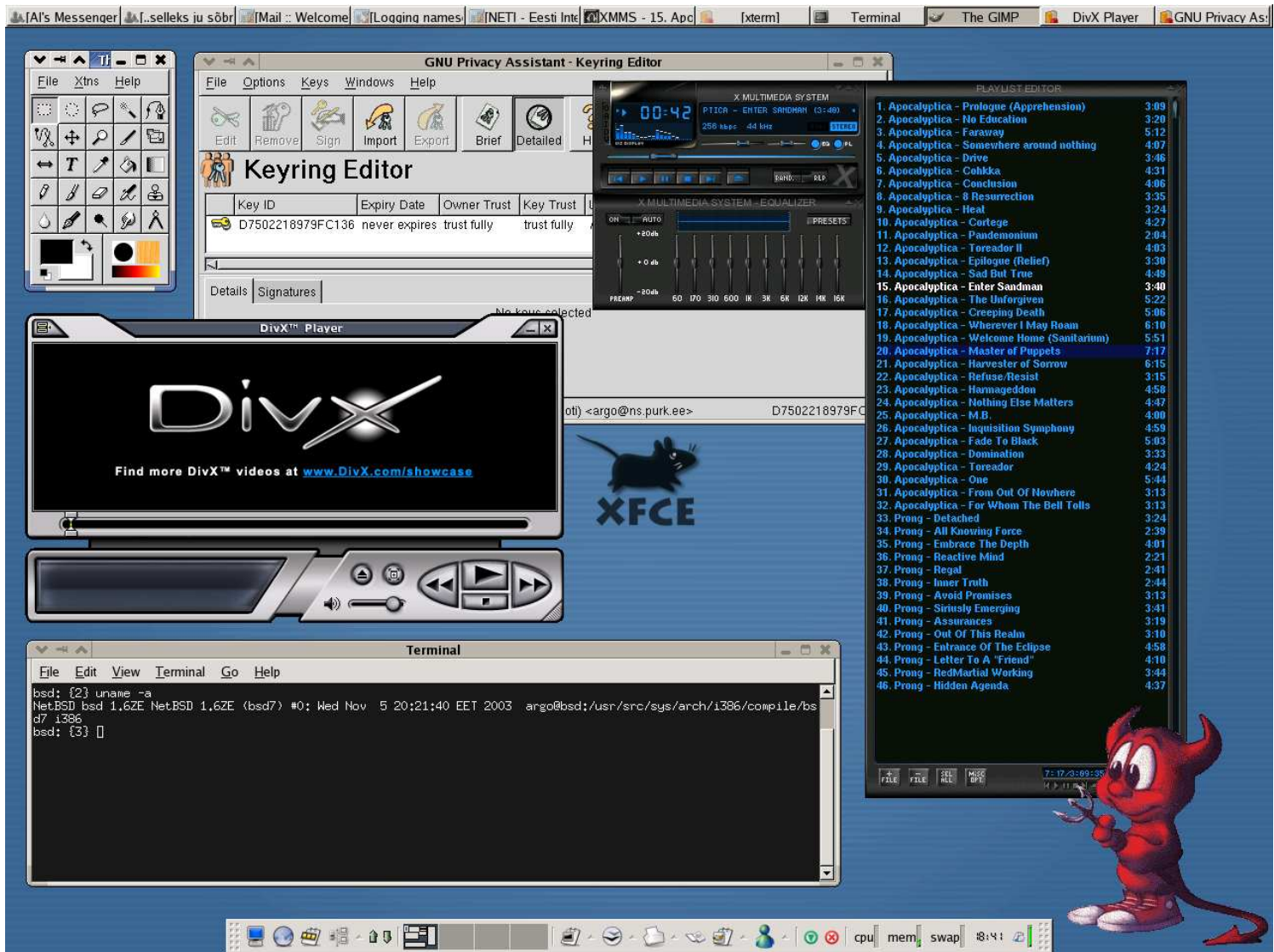
NetBSD looks like KDE



NetBSD looks like GNOME



NetBSD looks like Xfce

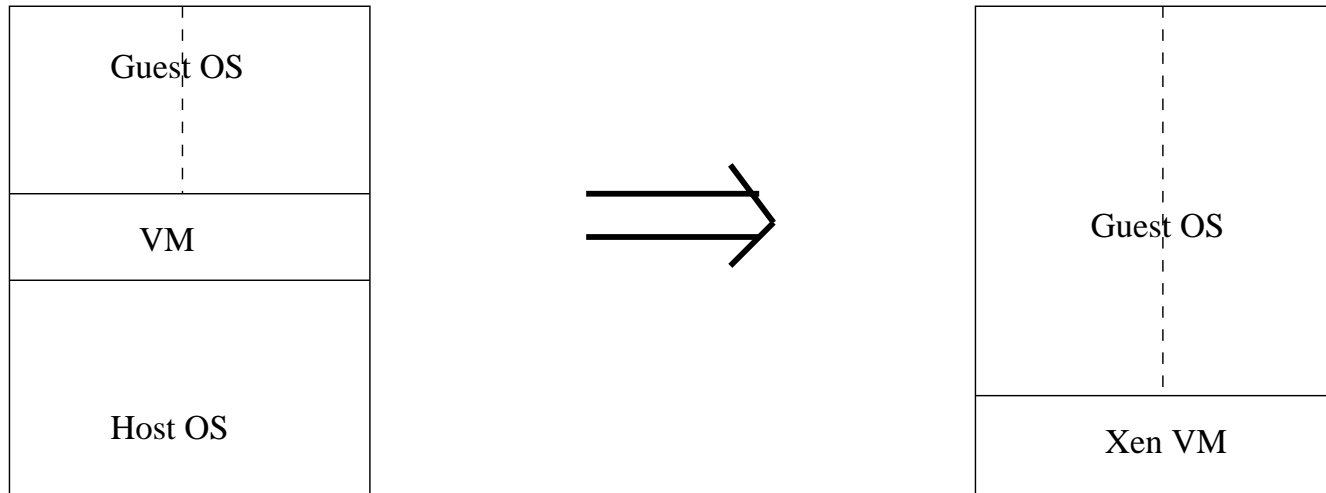


Key features

- Full Unix/Linux compatibility
- Binary emulation to run non-native programs (e.g. from Linux)
- Modular design makes it scale for lots of hardware configs
- From embedded devices over handhelds & PDAs (StrongARM, Xscale, MIPS) to modern PCs (Intel, AMD Opteron) and classic workstations (Alpha, SPARC, MIPS, ...)
- Complete operating system with kernel and userland from one source
- for >50 hardware platforms
- > 5000 packages available

What's new?

- NetBSD 2.0 was released recently
- SMP on PCs, Opteron, Macs, SPARC
- Scheduler-Activations based Threads implementation
- Virtualisation support for the Xen virtual machine monitor (As an answer to FreeBSD Jails :)



Questions? Answers!

<http://www.NetBSD.org/>

<ftp://ftp.NetBSD.org/>

info@NetBSD.org