



Finding Direction – Marble goes Mobile

Torsten Rahn <torsten.rahn@basyskom.de>

02.07.2010 | Tampere, Finland | Academy 2010





Marble for Users

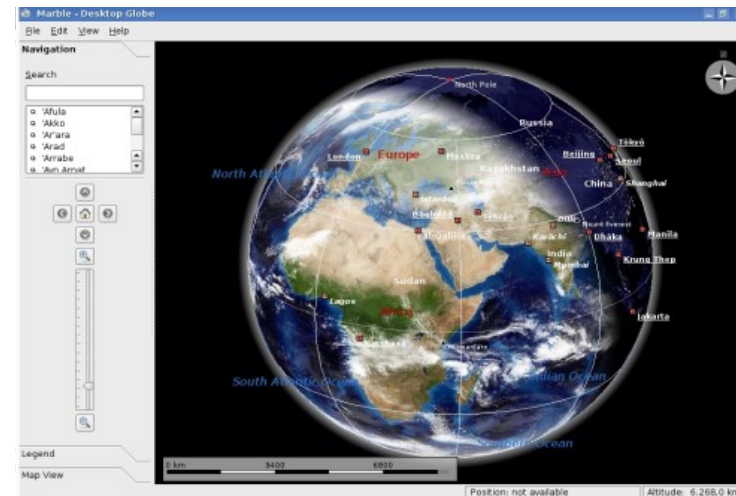
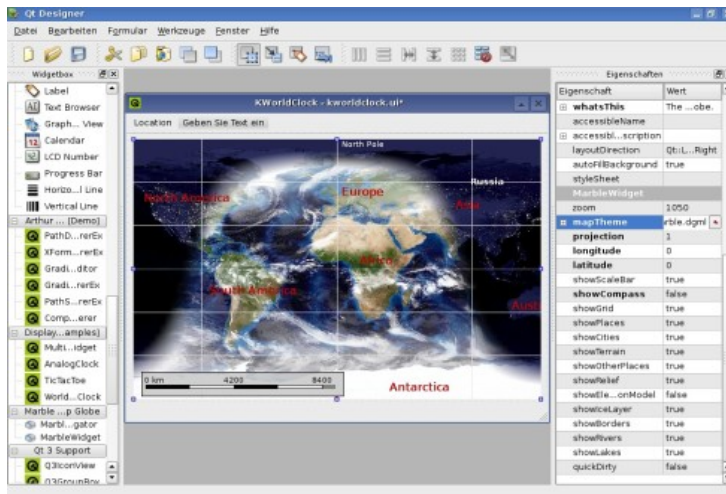
- **Learn and Explore**
 - The world at your fingertips
- **Lookup Places and Friends**
 - Map information online
- **Get Directions**
 - Routing and GPS made easily





Marble for Developers

- Extends Qt for Displaying Maps
- Provides a map component that is easy to integrate into **your** application





Marble Library

- Qt library with a **Qt'ish API** to provide a map
- Projections (even non-cartesian ones).
- Data structure models OGC standard **KML**
- **GeoGraphicsView**
- **Plugin** architecture

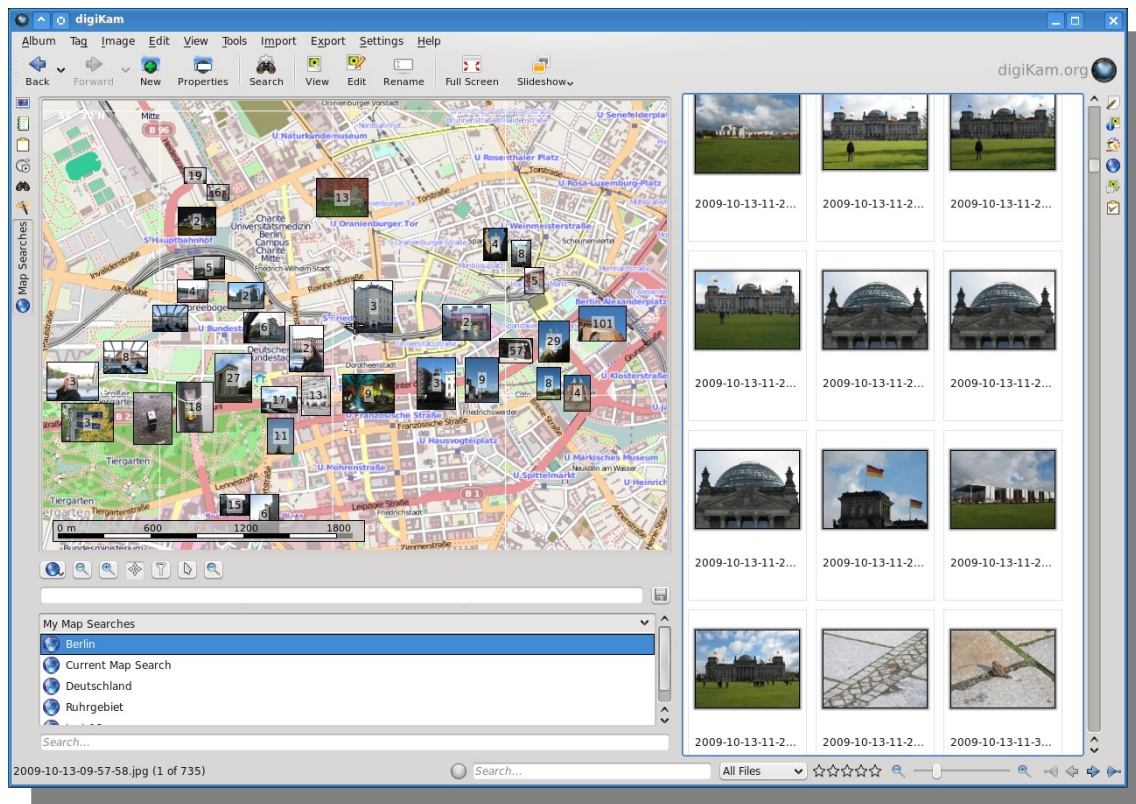


MARBLE



Examples of Use

- KDE Applications: e.g. **Digikam**





Examples of Use

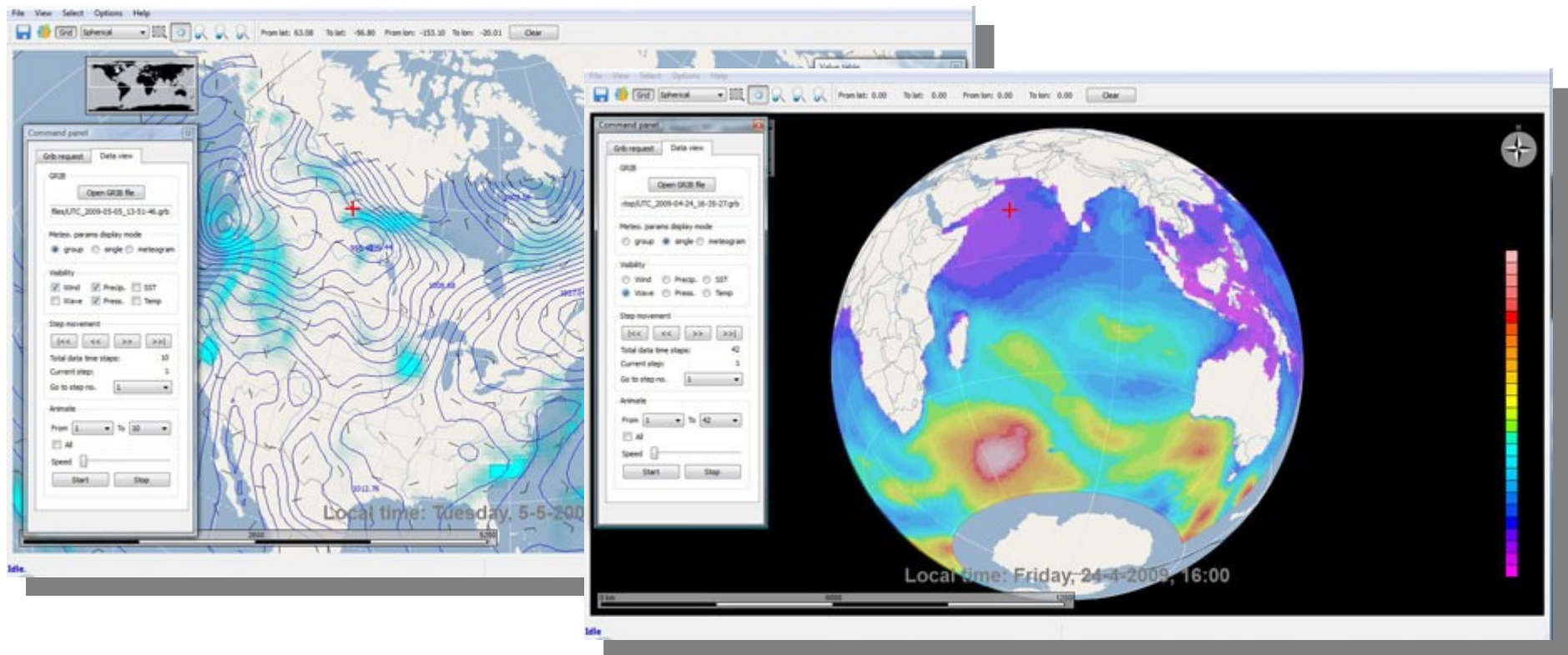
- **Chakra Live CD** installer:
- **Language and Time Settings**





Examples of Use

- Theyr.com: **GribView 2.0** Weather Planner





Key Facts:

- Only Requirement: **Qt**
- Free Software, **LGPL**
- OpenStreetMap & Wikipedia integration
- Modular & easily extensible
- **Very active community** of developers & users





KDE is ours.



Isn't Marble supposed to be portable?

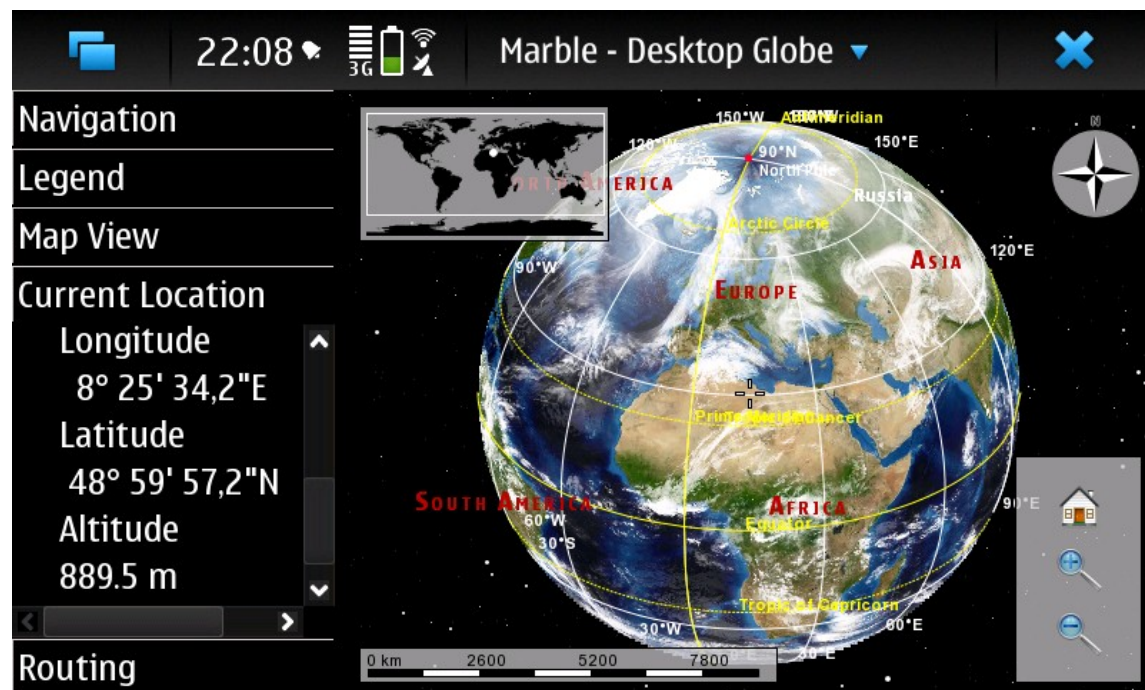


MARBLE



Platforms

- Linux, Unix
- MacOS X,
- MS Windows
- **MeeGo, Maemo 5**
- Symbian (?)



- Only dependency of libmarble: Qt 4.x





Marble MeeGo Roadmap

- June/July:
 - **Performance improvements**
- July/August:
 - **User Interface adjustments**
 - **Task based UI, Qt Quick support**





Marble MeeGo UI streamlining

- Make better use of Marble's **device profiles**
- Have the Marble UI centered around a **single lineedit** (also for the desktop version).
- **MeeGo** integration. Different approaches:
 - MeeGo **QStyle** integration
 - Native version based on **MeeGo Touch**
 - Alternative **Qt Quick** interface.

<http://gitorious.org/marble/earthwings-marble>



MARBLE



New in KDE 4.5: Routing

Atlas - Marble Desktop Globe

File Edit View Settings Help

Navigation

Legend

Map View

Current Location

Routing

A Bundesrepublik Deutschland

B la, Tampere, 33100, Finland

Get Directions Options

- Fahren Sie halb links auf 3 9
- Fahren Sie halb links auf 3495
- Fahren Sie halb links auf 3495
- Fahren Sie geradeaus auf Lempääläntie
- Fahren Sie halb rechts auf Lempääläntie
- Fahren Sie geradeaus auf Viinikankatu
- Fahren Sie links auf Järvensivu
- Fahren Sie rechts auf Kanslerir
- Fahren Sie rechts auf Kalevant

Estimated travel time: 1 days, 07:32 (2783.1 km)

Position: not available

Altitude: 1.042,2 km Tile Zoom Level: 3

Remove this destination

Export route...

Set Home Location

Reload Map

About





Routing

- Online vs. Offline Routing
- Marble Runner
- OpenRoutingService.org
- In-Place Node-Editing
- Export / Print Routes



Route Summary

10.4 km (about 48 minutes)

- A Bahnhofstraße, Langenbrand, Landkreis Rastatt, Regierungsbezirk Karlsruhe, Baden-Württemberg, Federal Republic of Germany
- B L 79, Schwarzwald, Bemersbach, Landkreis Rastatt, Regierungsbezirk Karlsruhe, Baden-Württemberg, Federal Republic of Germany
- C Rubachweg, Schwarzwald, Gaisbach, Baden-Baden, Regierungsbezirk Karlsruhe, Baden-Württemberg, Federal Republic of Germany

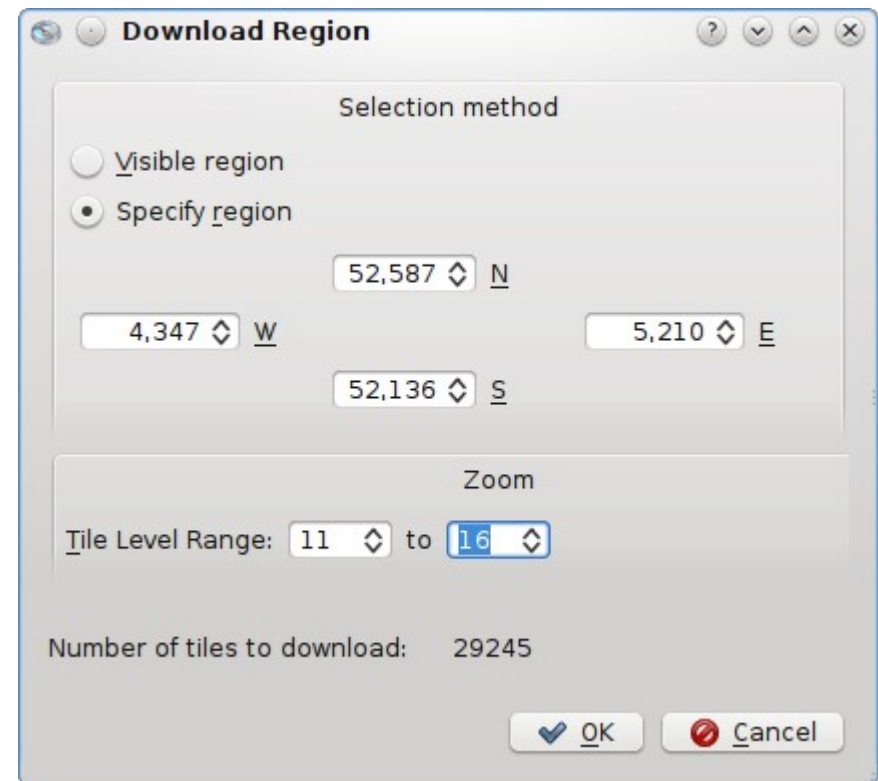
Route Instructions

No.	Distance	Instruction
1	0.0 km	Start (Southwest) on Bahnhofstraße
2	0.5 km	Drive right
3	0.6 km	Drive left on K 3754
4	2.8 km	Drive right on L 79
5	2.9 km	Drive half right
6	5.1 km	ViaPoint 1 - Drive straight forward on L 79
7	8.0 km	Drive right on Rubachweg
8	8.2 km	Drive left on Rubachweg - Arrived at destination!



New in KDE 4.5: Bulk download

- In addition to seamless download of map data: **Bulk Tile Download**
- Useful for offline usage for e.g. OpenStreetMap





New in KDE 4.5: WMS and Tile Blending

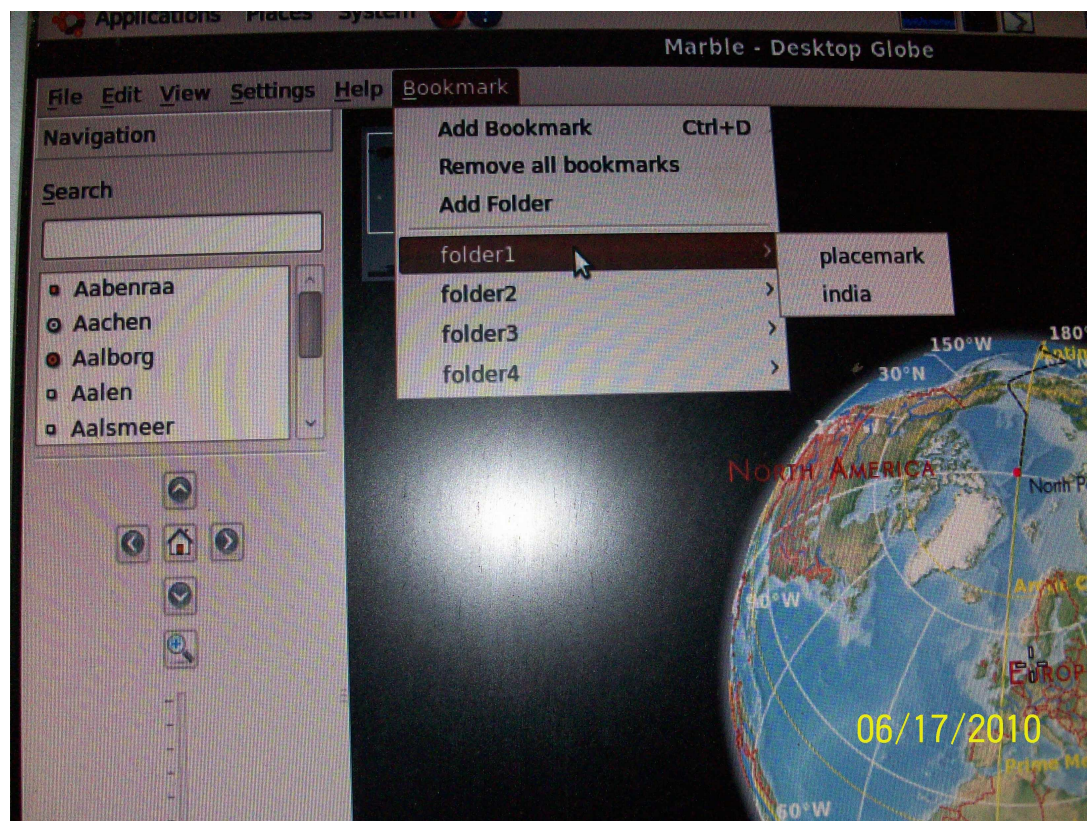
- Quick and Dirty **WMS support**
- **Multiple tiles stacked** and blended on top of each other
- Dozens of **blending types.**





Google Summer of Code 2010

- *Gaurav Gupta*: **Bookmarks and Annotations**





Google Summer of Code 2010

- *Harshit Jain: Time Support for Marble*
- Offline Database uses *Geonames.org* now





Google Summer of Code 2010

- *Siddharth Srivastava*: **Marble To Go** (Navigation Mode)





Marble needs your help!

We need Software Developers, Translators, Editors, Web Designers, QA people and You!

marble-devel@kde.org

IRC: **#marble** on irc.freenode.org

<http://edu.kde.org/marble>

Thanks for **Support:**  **basysKom**





KDE is ours.



World domination one step at a time.



MARBLE